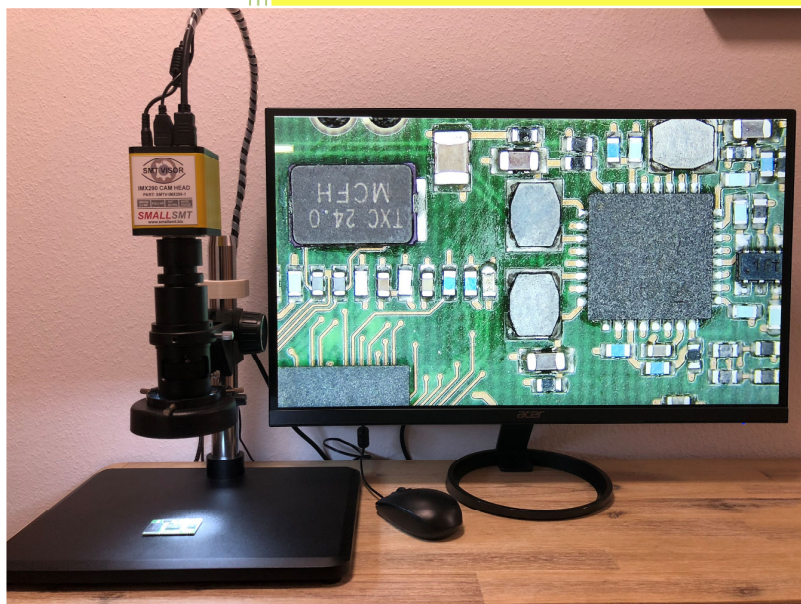


**SMALLSMT**  
YOUR SOURCE FOR SMALL VISION BASED PICK & PLACE MACHINES

**2018**

# Visor Inspection System



© 2018 Michael Bruch

SMALLSMT [www.smallsmt.biz](http://www.smallsmt.biz)

09.11.2018

## Inhalt

1 Main menu .....	3
2 Crosshair Menu .....	4
3 System Menu .....	5
4. Parts .....	6
Cable Holder Clamp .....	6
CAMERA HEAD TOP VIEW .....	7
5. Operating instructions .....	8
7. Technical Data .....	9



## **Important notes!**

It requires the proper and safe operation of a device, that it is properly transported and stored, properly installed and commissioned and operated as intended. Only individuals allowed operating the device, who are familiar with the installation, commissioning and operation and have the qualifications corresponding to their activity.

Note the contents of the operating instructions, the instructions attached to the device and the relevant safety regulations for the establishment and the operation of electrical installations.

The devices are manufactured according to DIN / EN and tested and left the factory in technically safe condition. If the information contained in the operating instructions in any case is not sufficient, please contact us or your local representative.

Instead of the referred to in these operating instructions and valid in Europe industry standards and regulations, note the relevant regulations in the country of the user when using the device outside their scope.

**WARNING! Dangerous electrical voltage!**

**It can cause electrical shock and burns.**

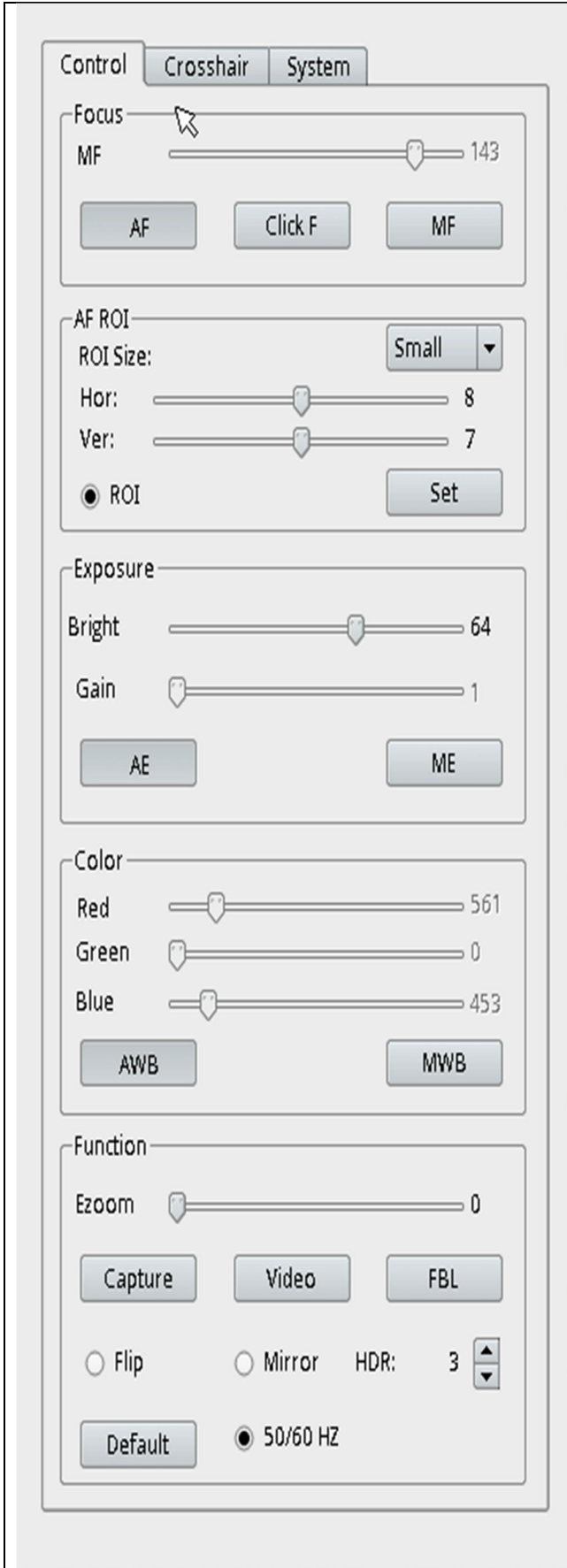
**Before starting service work, disconnect the power supply!**

**Observe the maximum permissible temperature for installation in the control cabinet.**

**It is to ensure sufficient distance to other devices or sources of heat.**

**Protect the microscope against water!**

## 1 Main menu



### 1.1 FOCUS

Three button options for focus modes to use.

**AF:** Enable Auto Focus

**CLICK F:** One-push focus start

**MF:** Manual adjust focus using slider

### 1.2 AF ROI

Select the auto focus area size (area of interest). The dropdown box set box size presets.

**ROI size:** "Hor" and "Ver" slider adjust the area

**SET:** This button saves the ROI settings.

### 1.3 EXPOSURE

**AE:** Auto Exposure adjustable contrast (Brightness).

**ME:** Manual Exposure (Adjustable gain).

### 1.4 COLOR

**AWB:** Auto White Balance.

**MWB:** Manual white balance.

Use the slider to adjust if manual white balance is enabled.

### 1.5 FUNCTION

**HDR:** High-Dynamic-Range improvement. (0=OFF, 1 to 3 the HDR grade)

**Ezoom:** Add digital zoom.

If SD card inserted FAT32 format!

**Capture:** Save screenshot to SD card.

**Video:** Start video recording in H264.

**FBL:** Flange back focus.

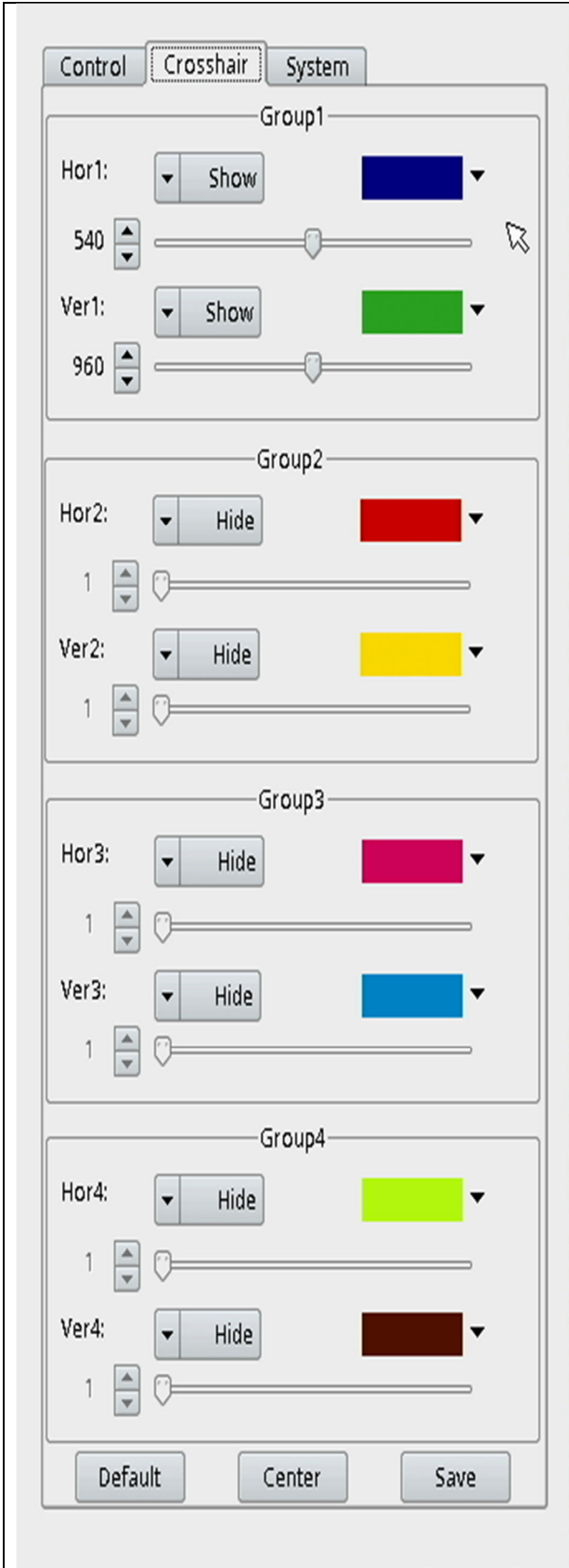
**Flip:** Vertical Flip.

**Mirror:** Horizontal Flip.

**50/60Hz:** Protection against screen flash.

**Default:** Reset all to default values.

## 2 Crosshair Menu



**Crosshair function divides into four groups, each group has horizontal alignment.**

The drop-down box show / hides the line.  
Use the cursor to relocate the line.

Add the color using color drop-down box.

**Default:** Rest the settings.

**Center:** Display a set of crosshairs at the center of the screen.

**Save:** Save the settings.

### 3 System Menu

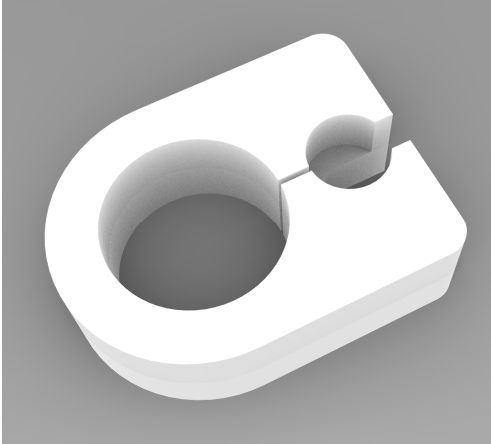
Adjust date and time in system menu.

Select the language in combo box.



## 4. Parts

### Cable Holder Clamp



Add the cable holder clamp to the microscope stand tube.

### CAMERA, MOUSE, CABLE



Mount the lens at C-mount thread of camera body. Connect mouse, HDMI cable and power supply cable and combine using the cable spiral. Put the cable assembly in second small hole of cable holder clamp.

The final result should look like this.



### CAMERA HEAD TOP VIEW





## 5. Operating instructions

Use the microscope in 100 to 140mm distance.

Set HDR parameter to 3 and enable the AF mode.

If you want to save pictures to SD CARD use FAT32 format and max 4Gb (speed rating 10) cards.

Video files saved in H264 format.

## 7. Technical Data

### Parts delivered

**Full working inspection system including:**

Camera Head IMX290, Microscope zoom lens, Stand, Mouse, HDMI cable, Power supply

### Product parameter

<b>Model</b>	SMTV-IMX290-1
<b>Lens</b>	16X-160X Adjustable Magnification 25mm Zoom C-mount Lens 0.7X~5X, working distance 110 - 170mm
<b>Camera</b>	IMX290 Sony 2.2MP, wide range automatic zoom BSI high light sensitive sensor
<b>Pixel Size</b>	1/2.8"
<b>Lens mount</b>	C / CS type
<b>Exposure</b>	automatic and manual
<b>Display frame rate</b>	60Hz at 1080P
<b>Shutter Speed</b>	1/50s(1/60s) ~ 1/10000s
<b>Software functions</b>	HDR mode, AWB / MWB, Color adjust Save picture to micro SD Save H264 Video to micro SD Add Lines horizontal and vertical Real Time Clock
<b>Machine dimensions</b>	300x300x250mm
<b>Machine weight</b>	5kg
<b>Shipping weight</b>	8kg
<b>Shipping size</b>	400x400x300mm
<b>Power supply</b>	AC 230V / 110V
<b>Warranty</b>	12 Months parts exchange including shipping fee excluding Customer need to exchange parts on machine.